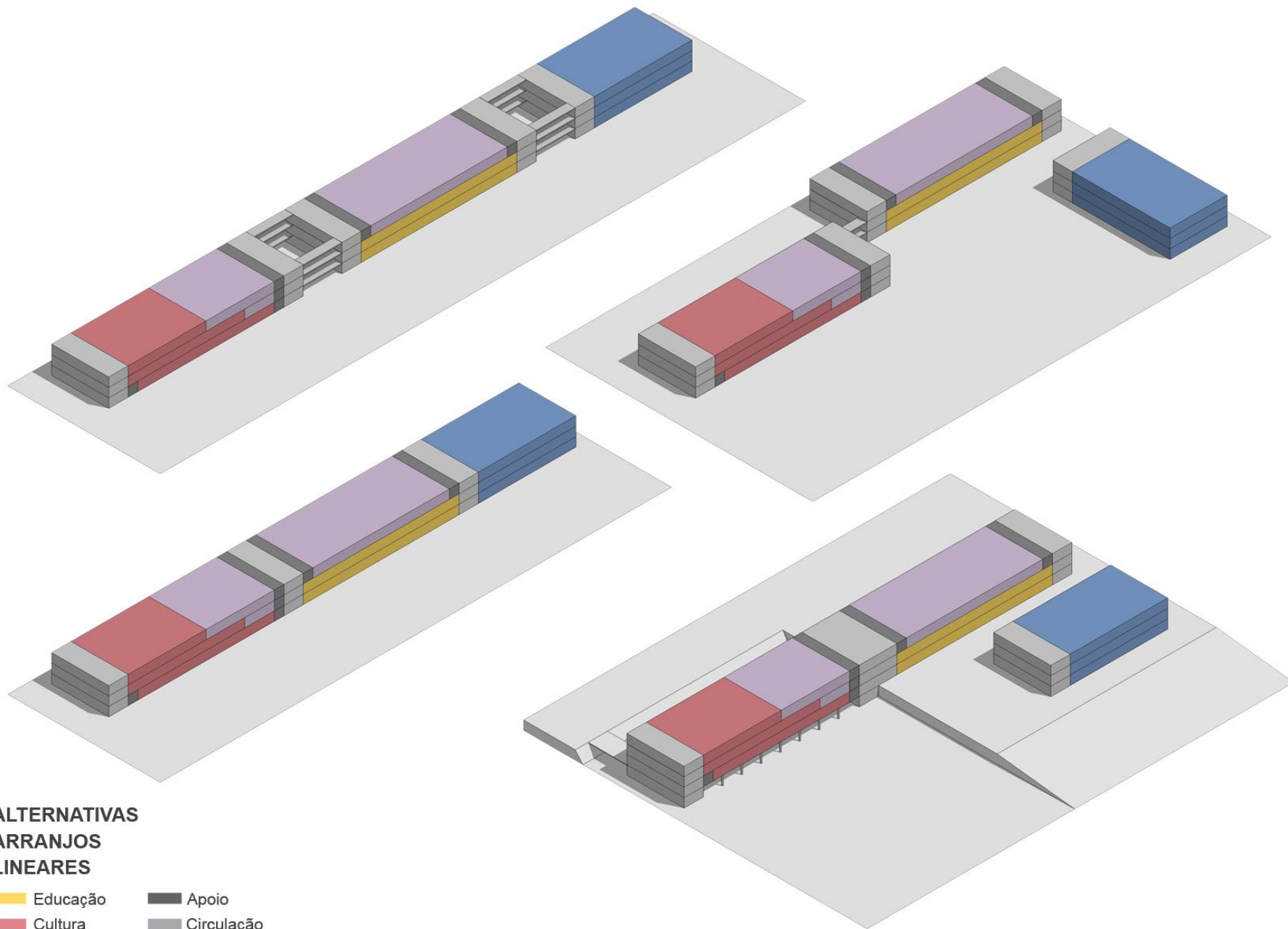








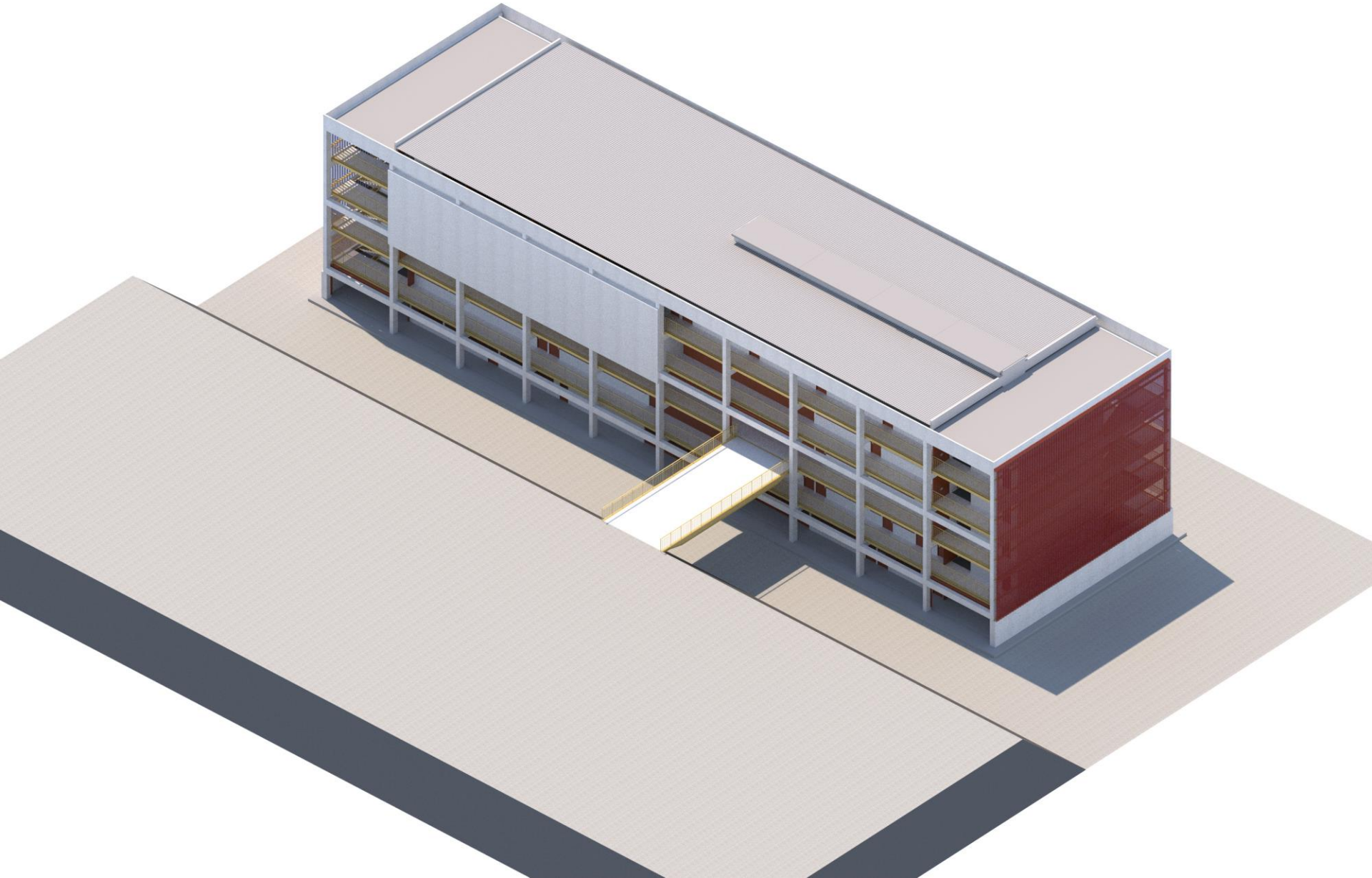
ARRANJO LINEAR
vista de modelo eletrônico



**ALTERNATIVAS
ARRANJOS
LINEARES**

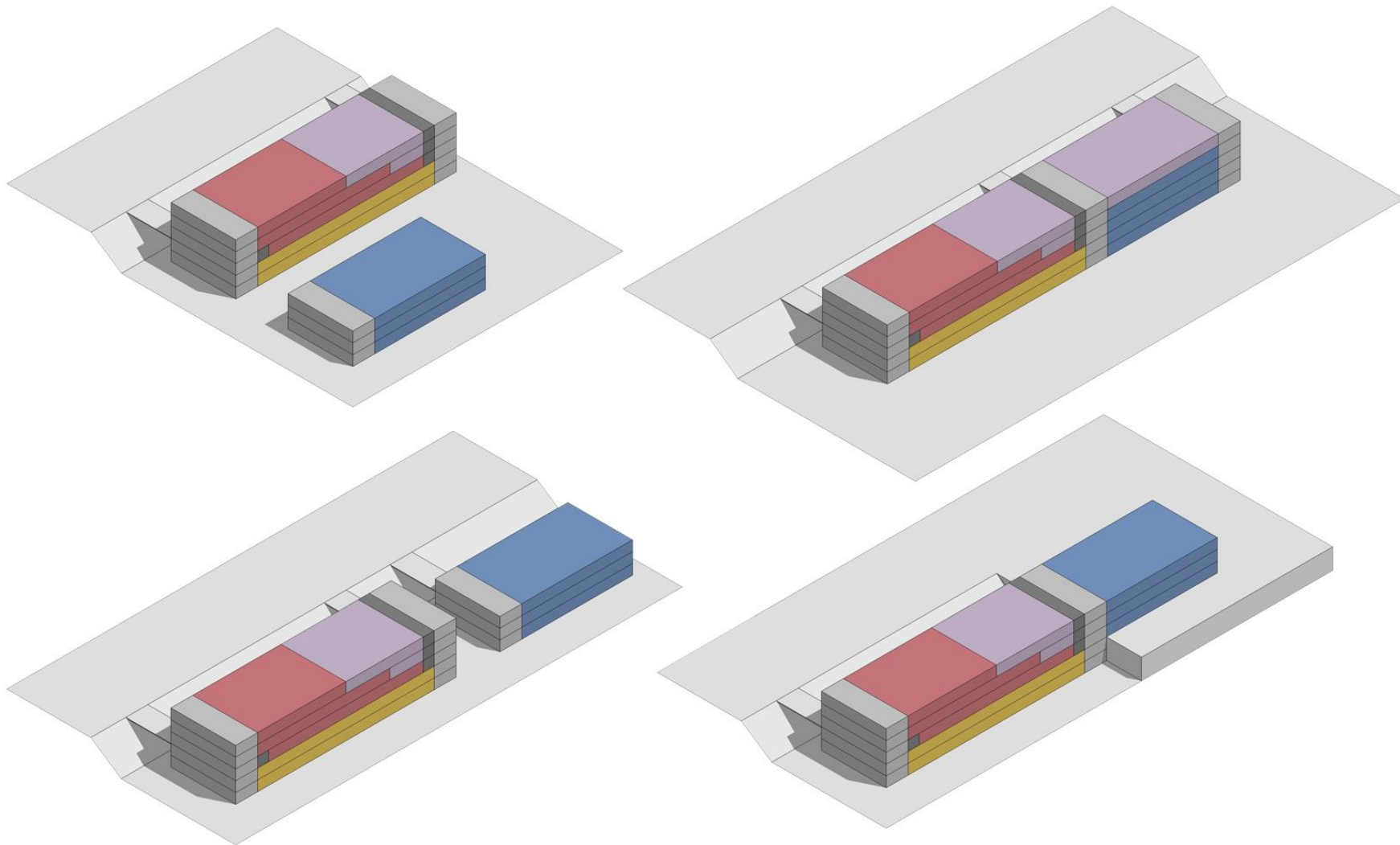
- | | |
|--|--|
|  Educação |  Apoio |
|  Cultura |  Circulação |
|  Esportes | |
|  Uso Múltiplo | |

ARRANJO VERTICAL
vista de modelo eletrônico



ARRANJO VERTICAL
vista de modelo eletrônico

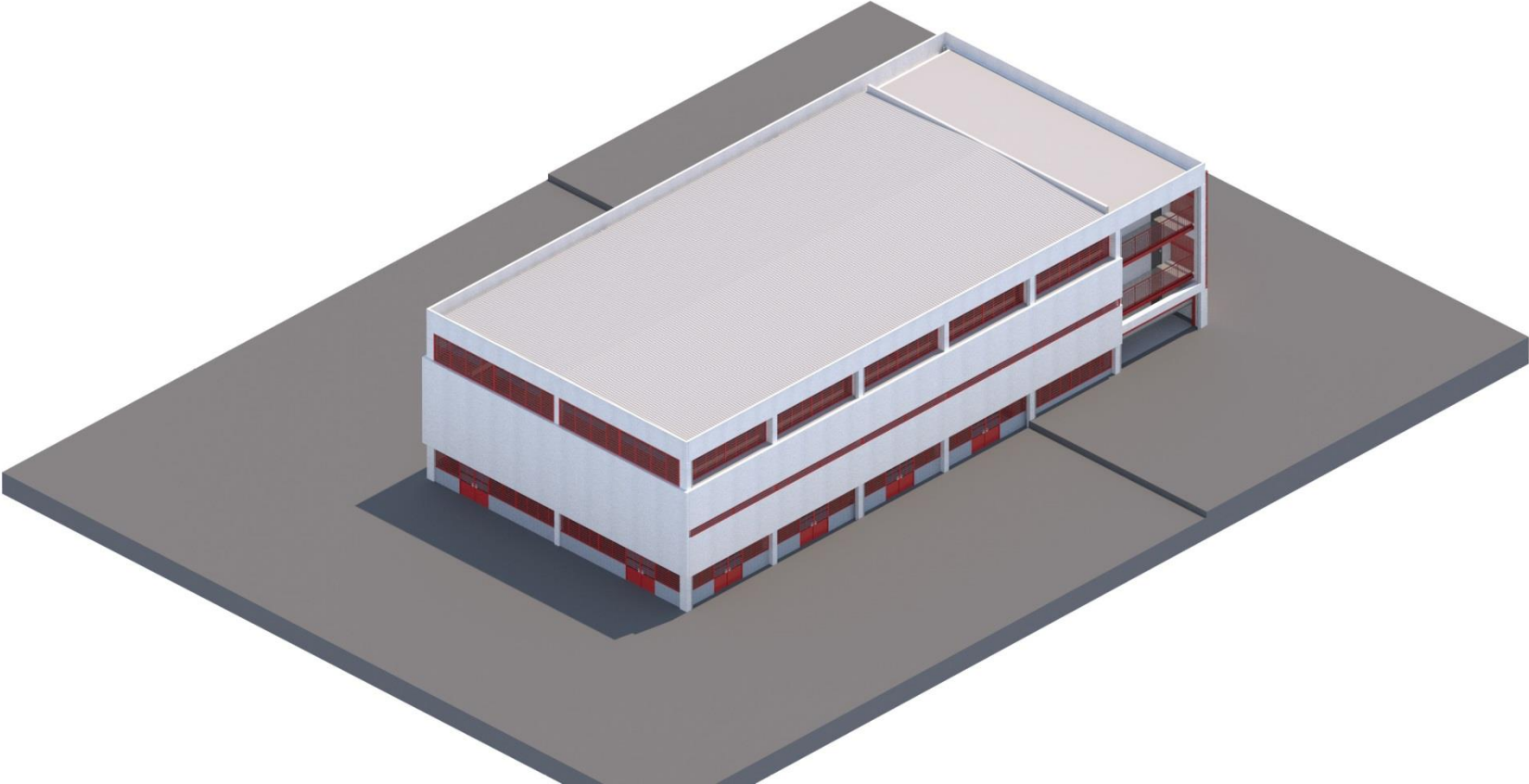




**ALTERNATIVAS
ARRANJOS
VERTICAIS**

- | | |
|---|---|
| Educação | Apoio |
| Cultura | Circulação |
| Esportes | |
| Uso Múltiplo | |

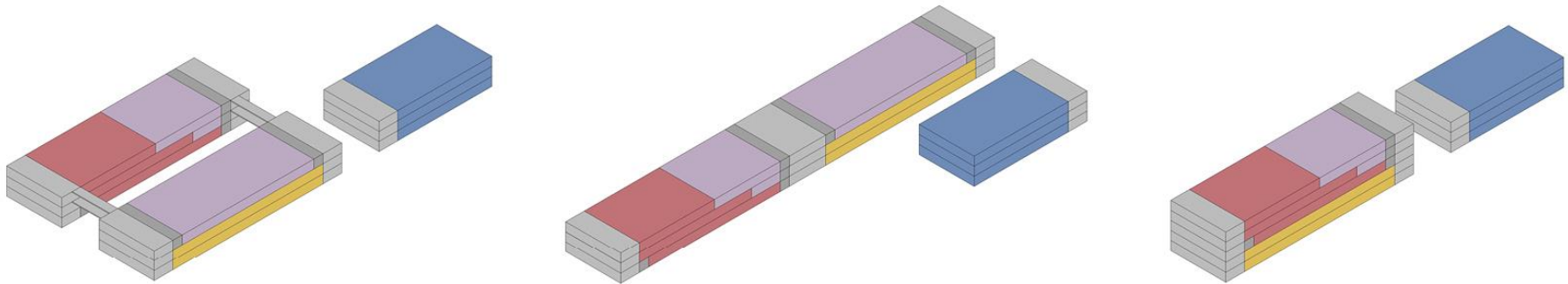
BLOCO ESPORTIVO
vista de modelo eletrônico

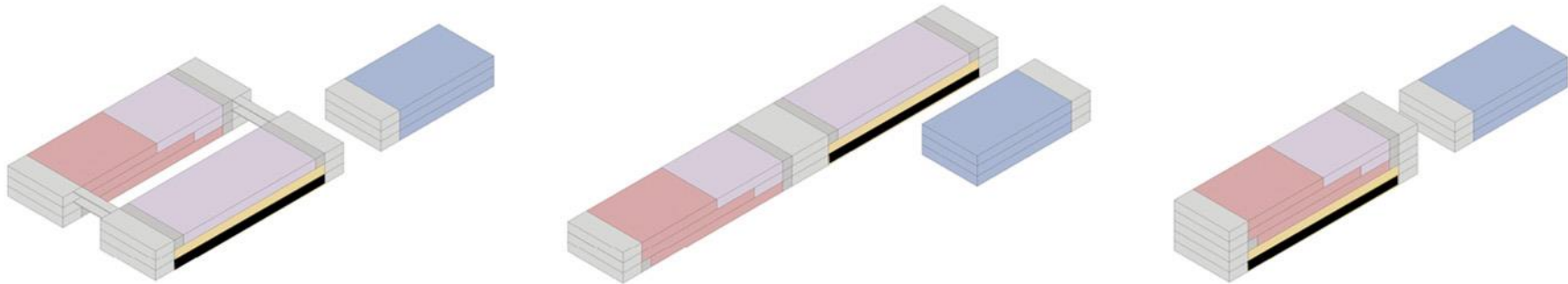
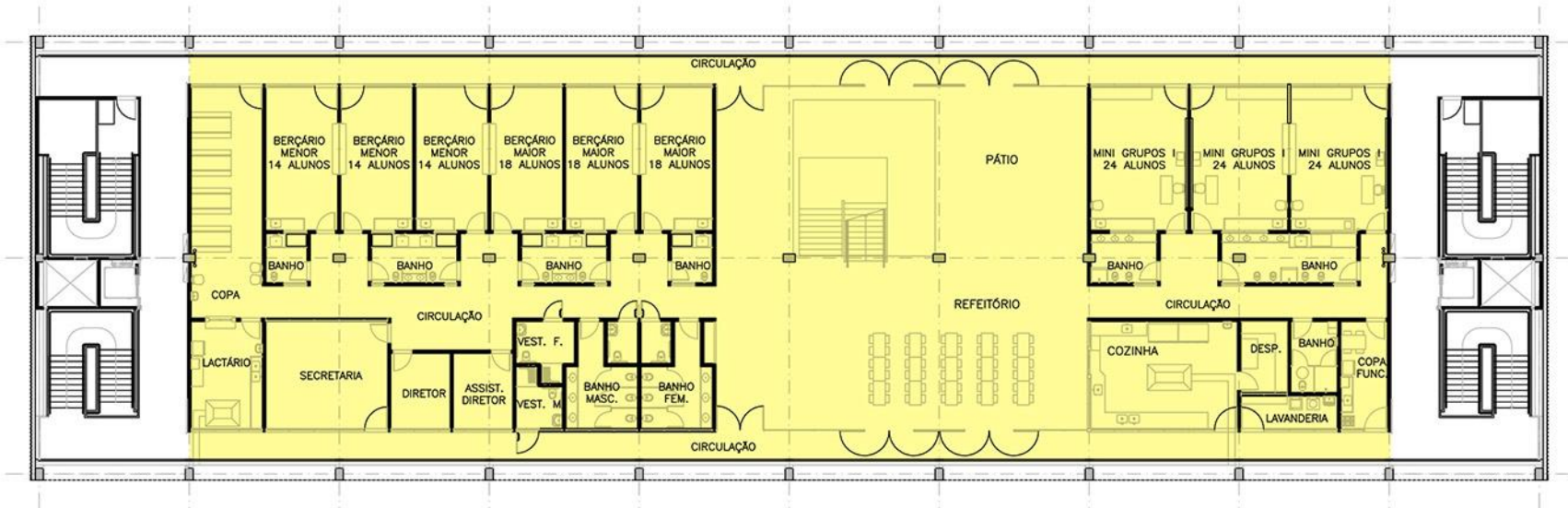


BLOCO ESPORTIVO
vista de modelo eletrônico



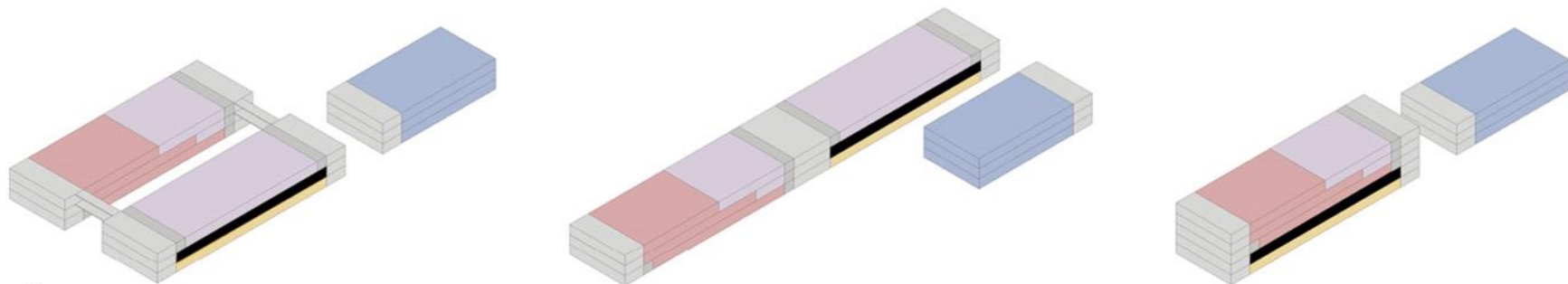
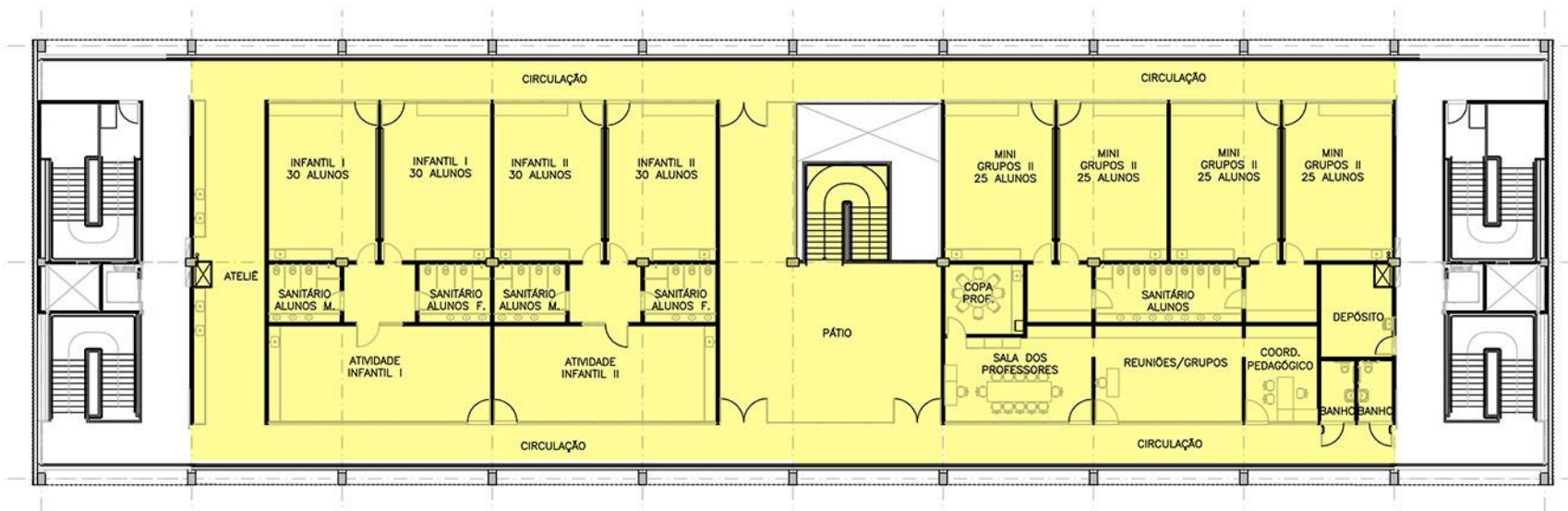
DISTRIBUIÇÃO DO PROGRAMA





EDUCAÇÃO: CEMEI
PAVIMENTO INFERIOR

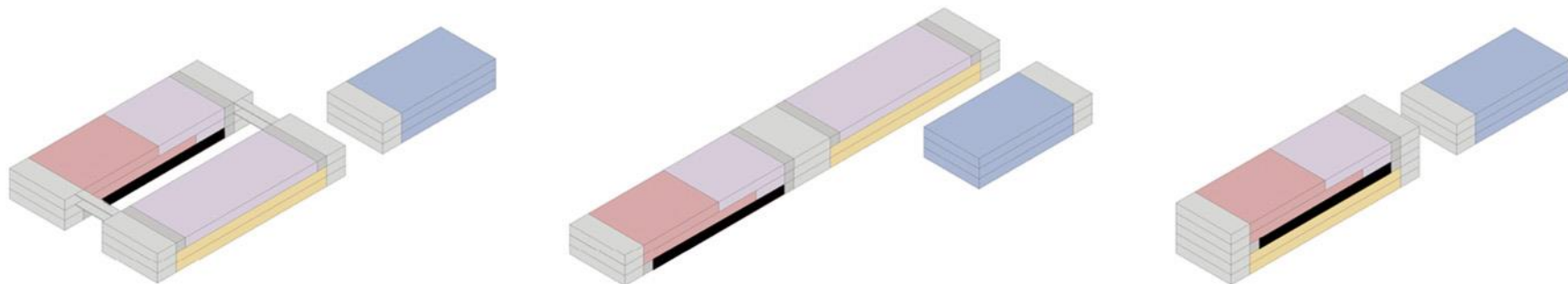
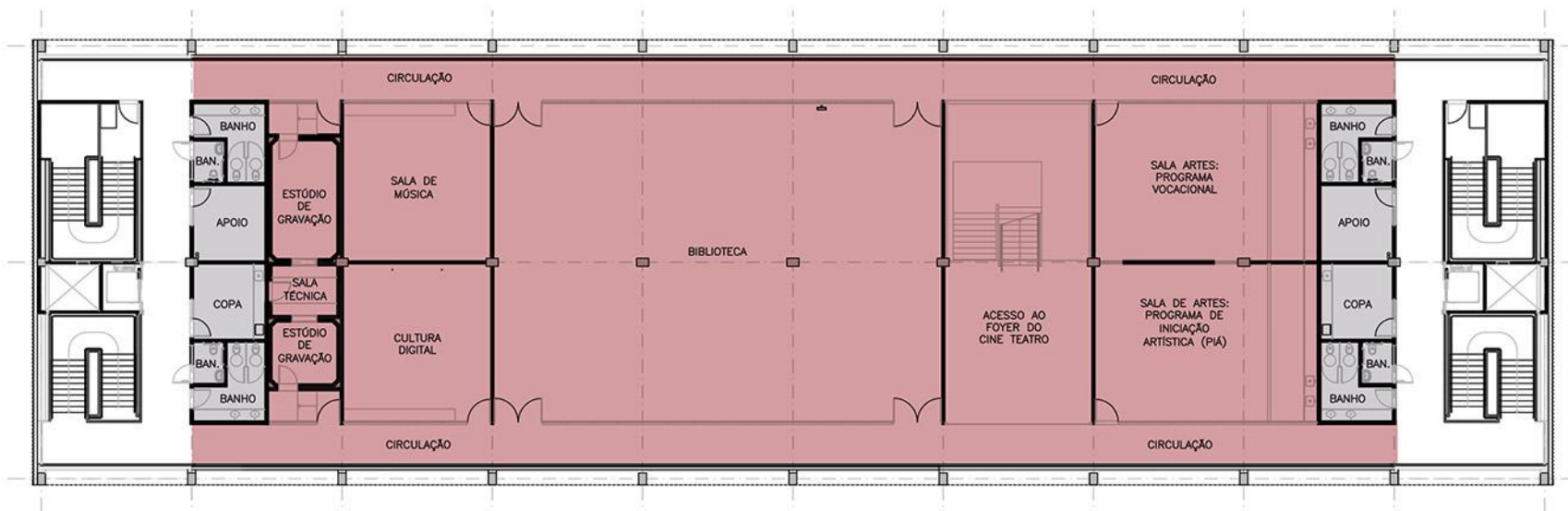
168 crianças de 0 a 3 anos período integral



EDUCAÇÃO: CEMEI

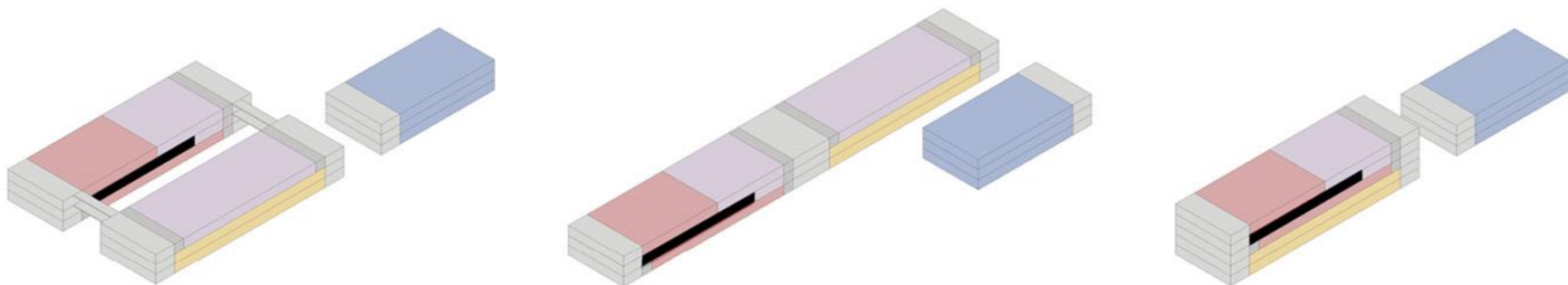
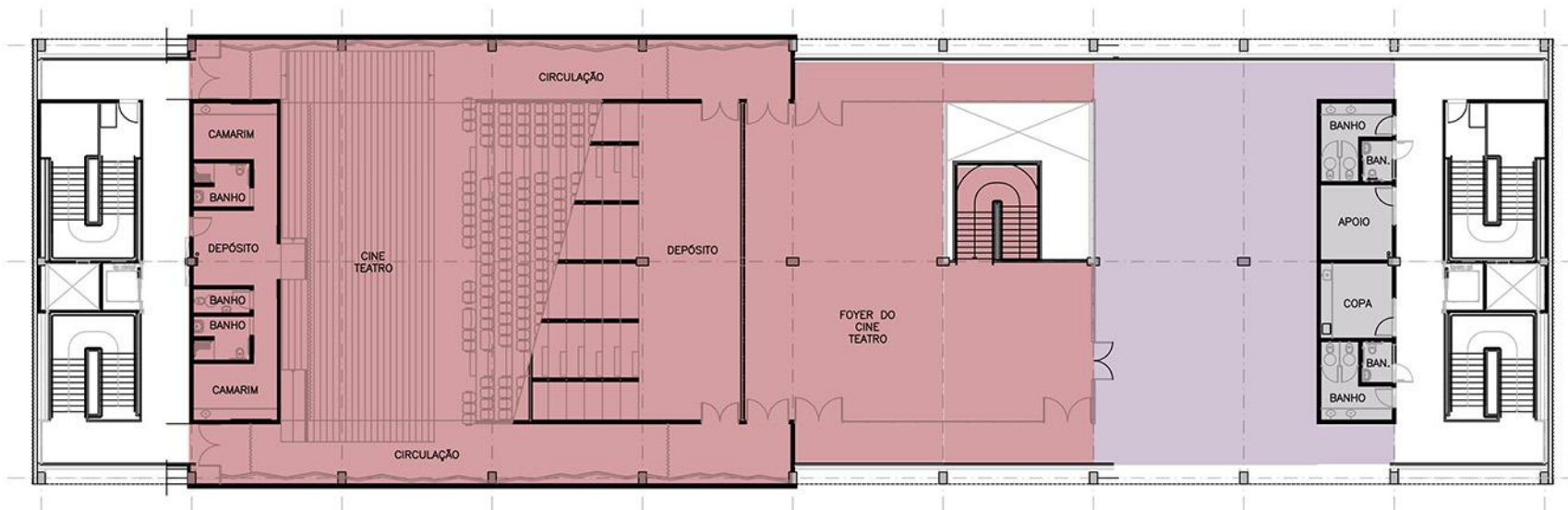
PAVIMENTO SUPERIOR

100 crianças de 3-4 anos período integral
 120 crianças de 4-6 anos por período
 total 508 crianças de 0-6 anos ao longo do dia



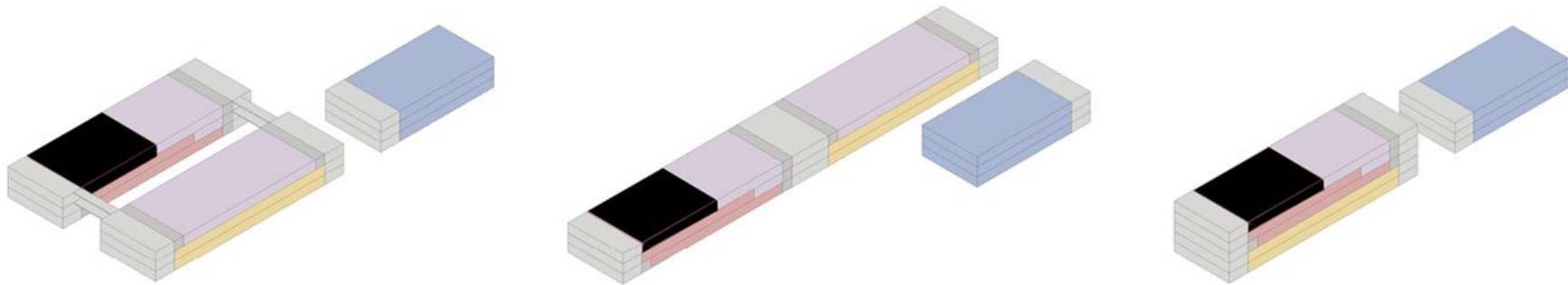
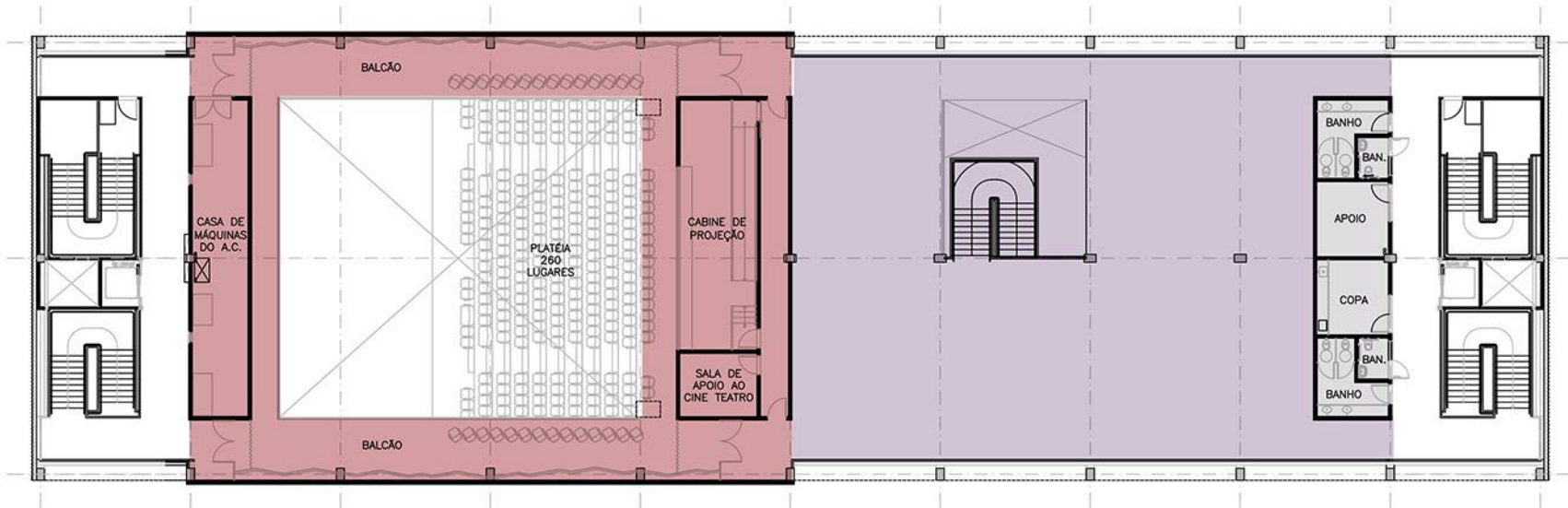
CULTURA
PAVIMENTO INFERIOR

estúdio de gravação, oficina,
biblioteca, programa vocacional,
programa PiÁ



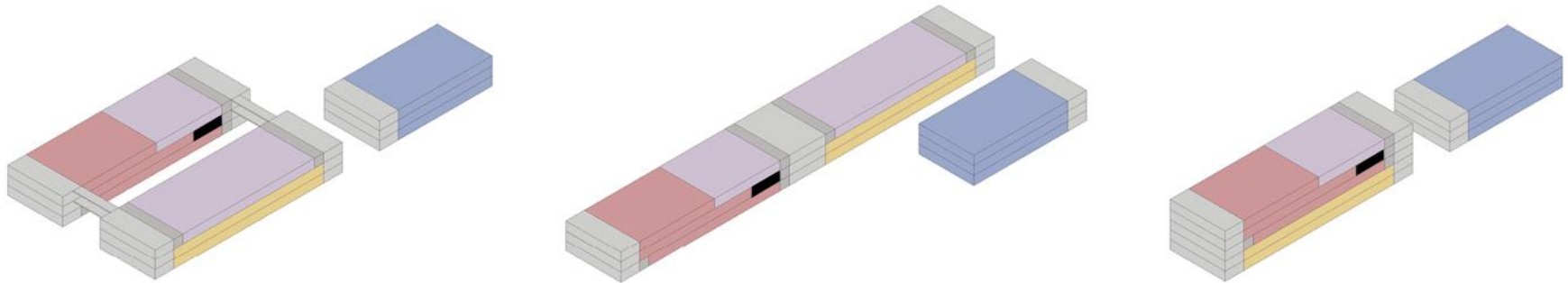
CULTURA: CINE TEATRO
PAVIMENTO INTERMEDIÁRIO

alternativa com arquibancada fixa
250 a 300 lugares

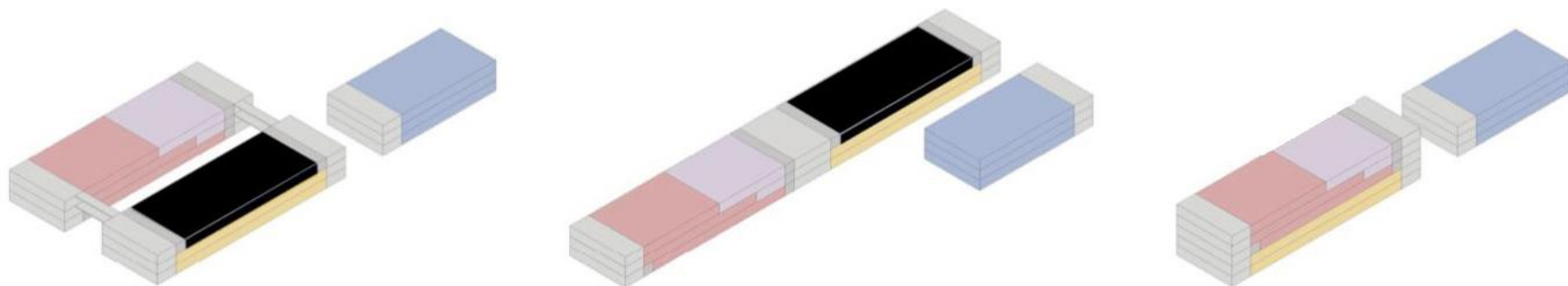
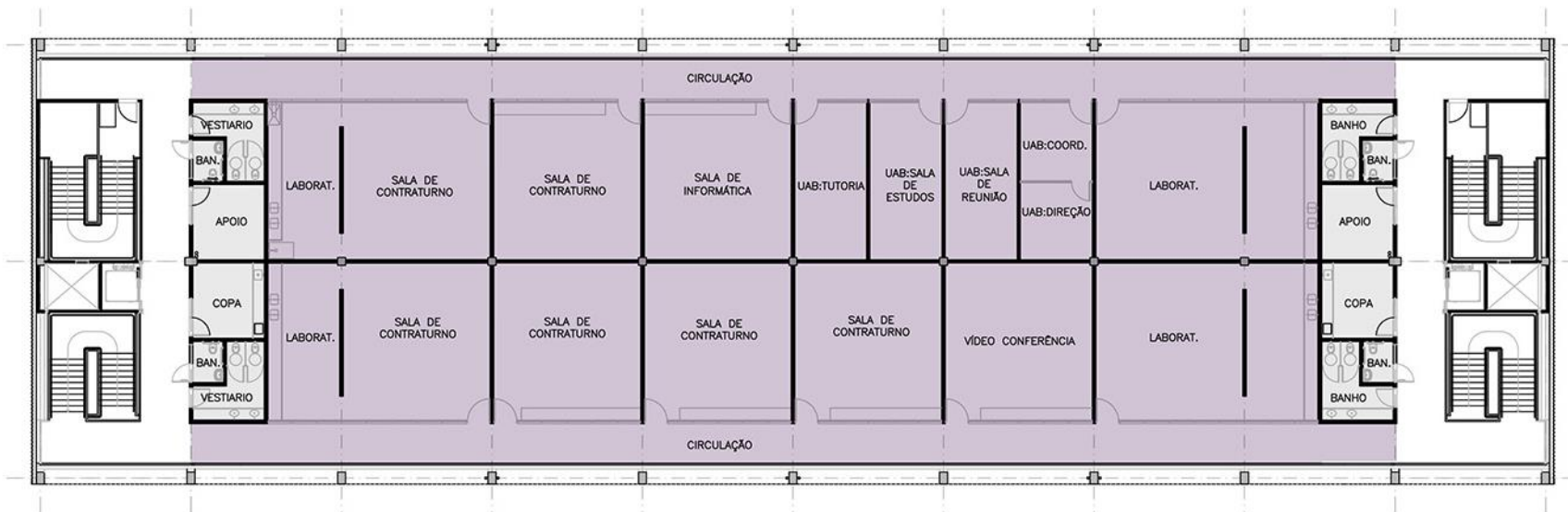


CULTURA: CINE TEATRO
PAVIMENTO SUPERIOR

alternativa com arquibancada fixa
250 a 300 lugares

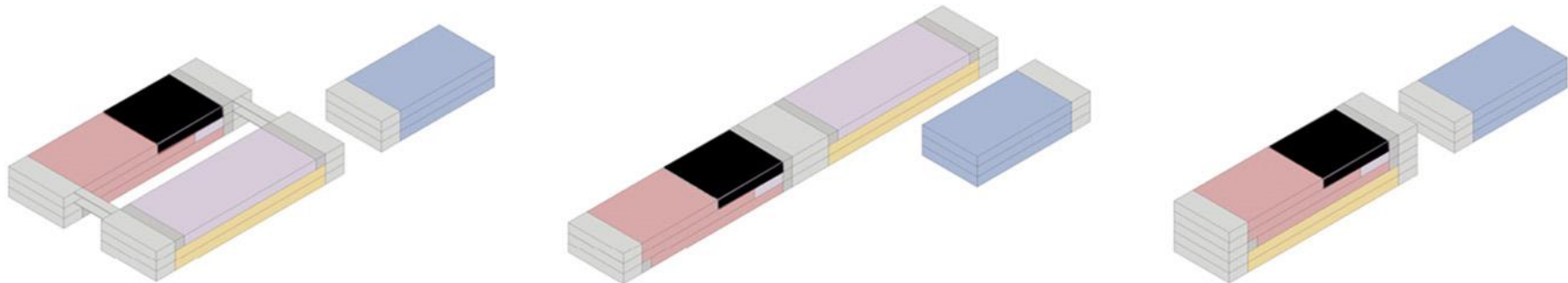
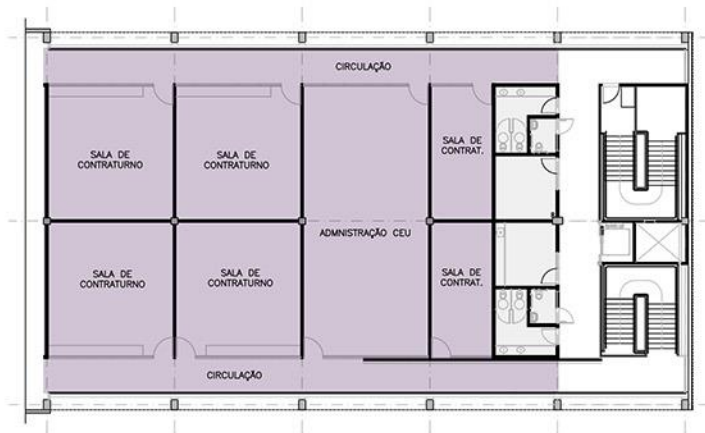
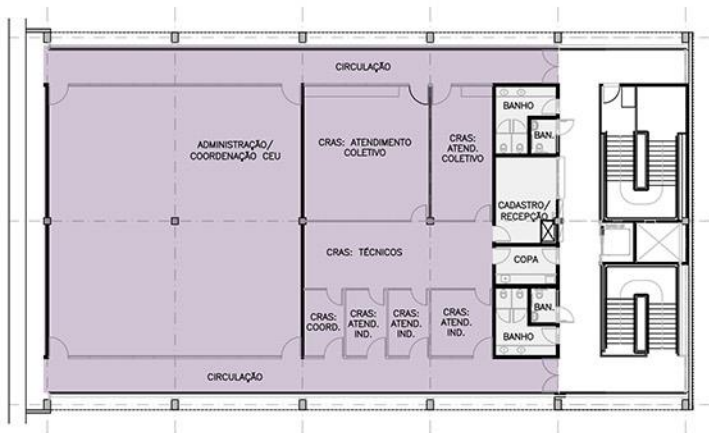


USO MÚLTIPLO: REFEITÓRIO



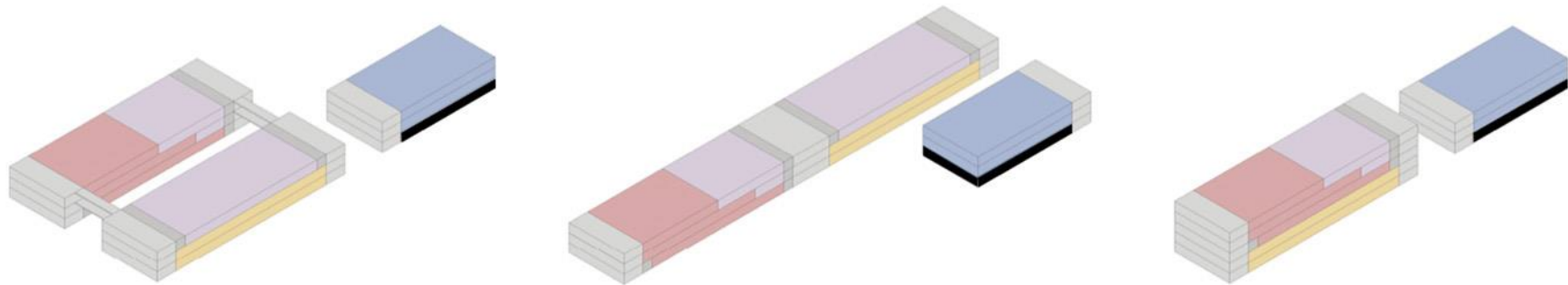
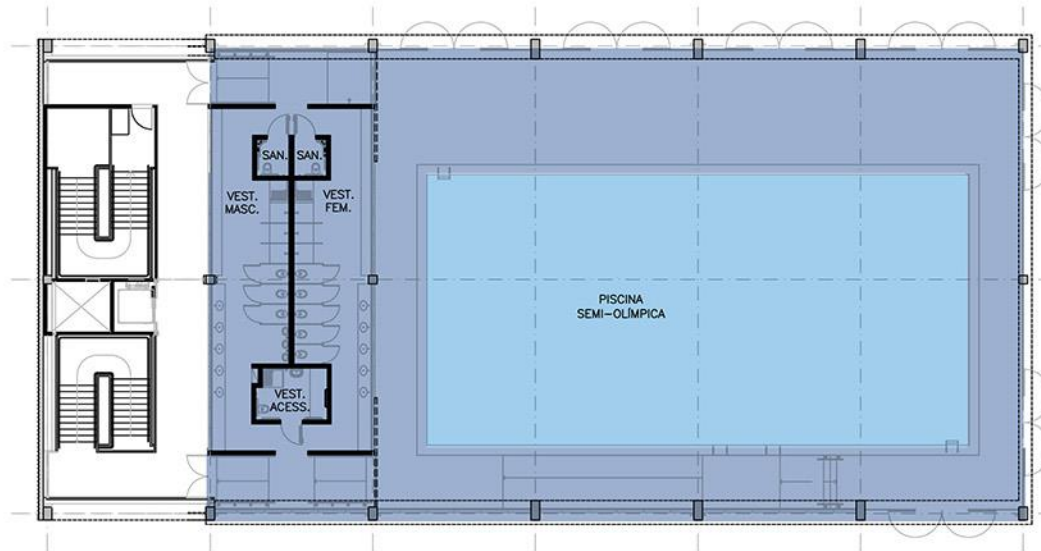
USO MÚLTIPLO

As salas de uso múltiplo poderão abrigar os seguintes programas: atividades complementares educacionais de contraturno (aulas de música, leitura, laboratórios, artes), Escola de Jovens e Adultos (EJA), Universidade Aberta do Brasil (UAB), aulas do PRONATEC (Programa Nacional de Formação Técnica de Mão de Obra) e a administração do CEU.



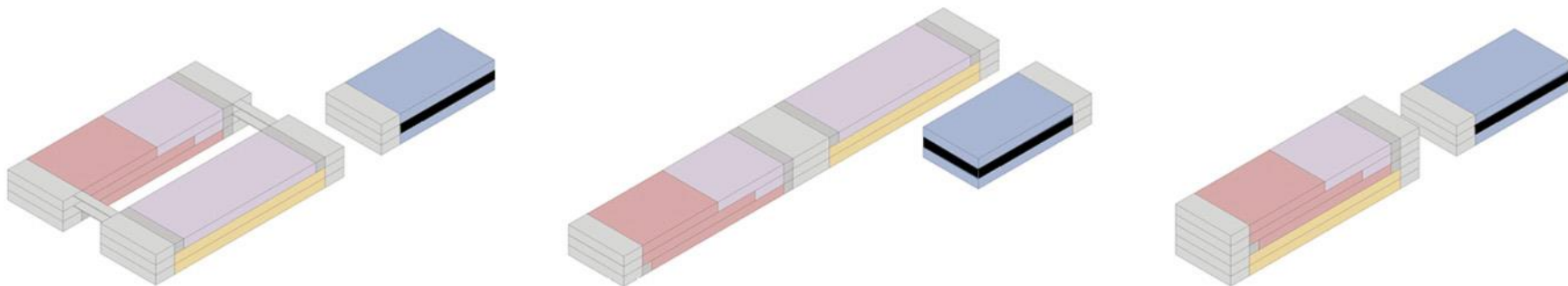
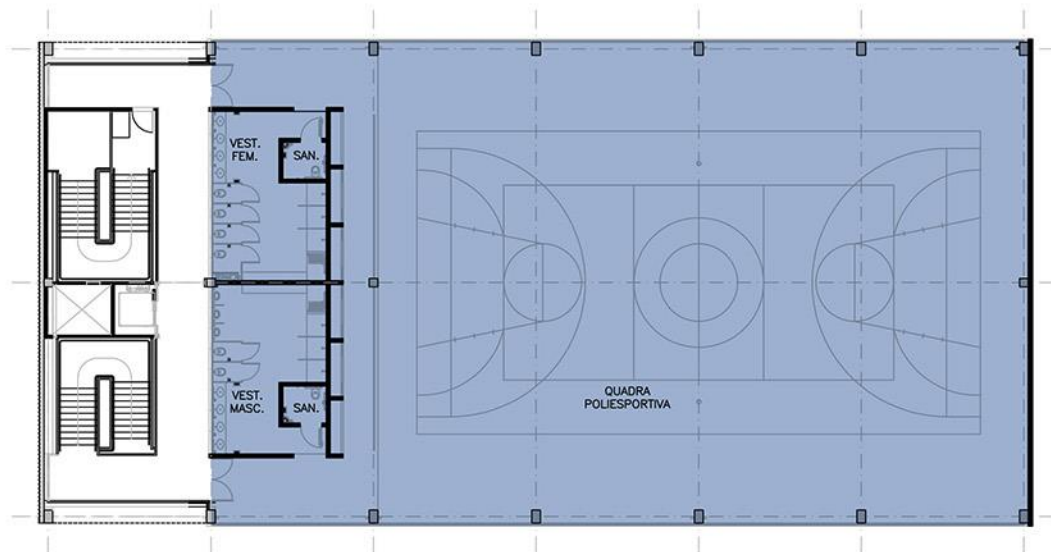
USO MÚLTIPLO: VARIÁVEL CONFORME O ARRANJO

As salas de uso múltiplo poderão abrigar, nos arranjos LINEARES e PARALELOS, os seguintes programas: atividades educacionais de contraturno, EJA, UAB, PRONATEC, CRAS e a administração do CEU. Nos arranjos VERTICAIS, esses programas terão formato reduzido, com atividades educacionais de contraturno e a administração do CEU.



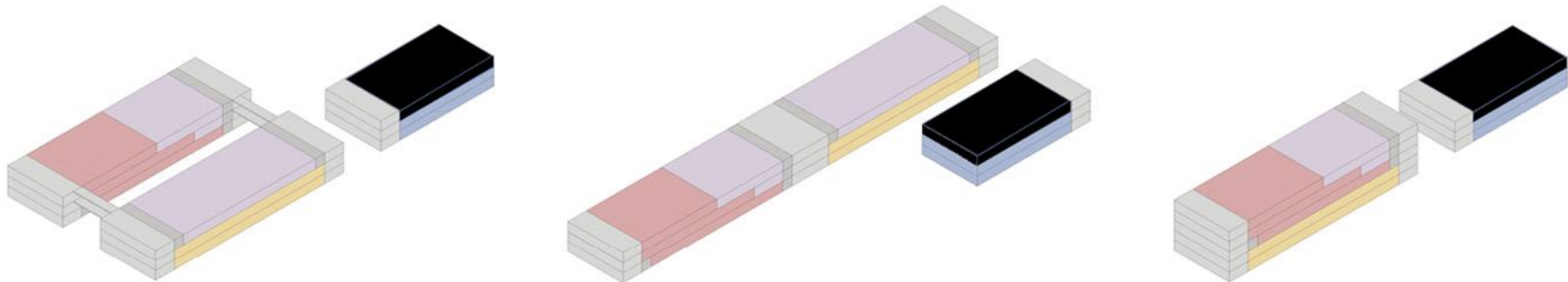
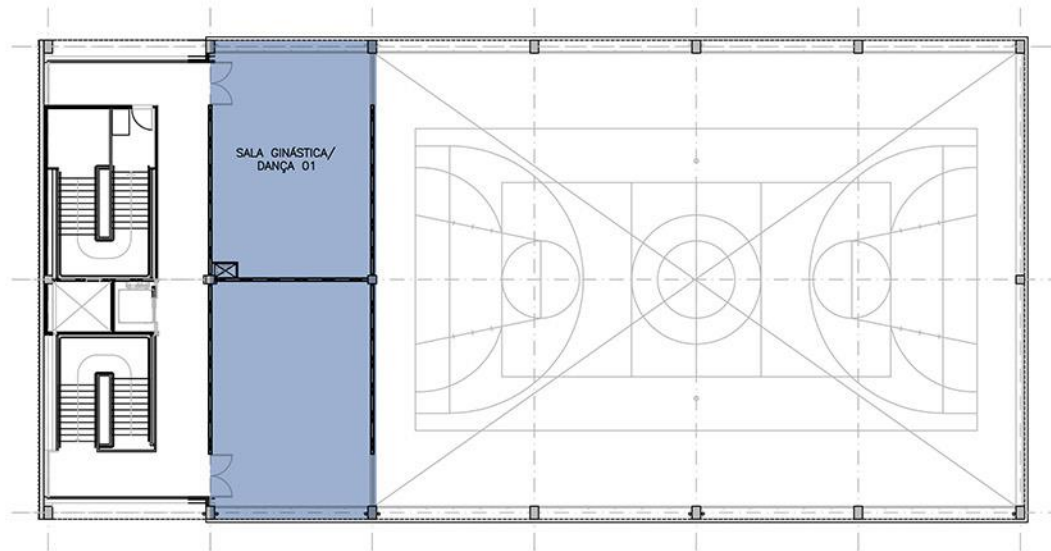
ESPORTE: PISCINA
PAVIMENTO INFERIOR

piscina semi olímpica coberta
 com vestiário



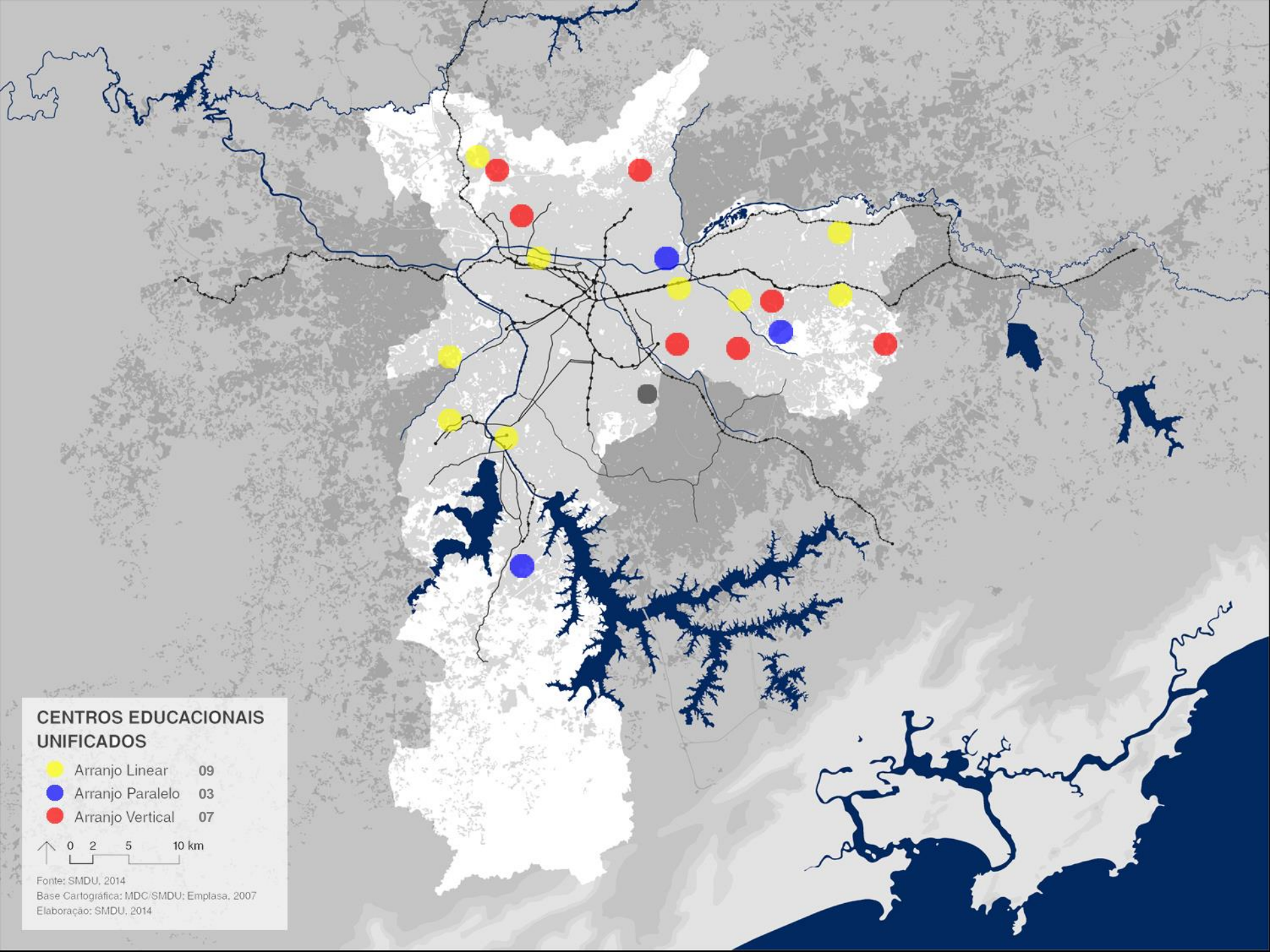
ESPORTE: QUADRA
PAVIMENTO INTERMEDIÁRIO

quadra poliesportiva com vestiário



ESPORTE: QUADRA PAVIMENTO SUPERIOR

as salas multiuso poderão abrigar os seguintes programas:
dança, capoeira, artes marciais, boxe, ginástica.



CENTROS EDUCACIONAIS UNIFICADOS

- Arranjo Linear 09
- Arranjo Paralelo 03
- Arranjo Vertical 07



Fonte: SMDU, 2014
Base Cartográfica: MDC/SMDU; Emplasa, 2007
Elaboração: SMDU, 2014