

**ELECTION OF THE MUNICIPAL IMMIGRANT COUNCIL TERM  
2025-2027**

**GUIDELINES MANUAL FOR IN-PERSON AND VIRTUAL VOTING**

**Coordination of Policies for Immigrants and Promotion of Decent  
Work  
Municipal Secretariat for Human Rights and Citizenship**

**2025**

Hello!

This document aims to guide the population on the election of the Municipal Council for Immigrants:

The Municipal Council for Immigrants (CMI) is a joint consultative body whose purpose is **to participate in the formulation, implementation, monitoring, and evaluation of the Municipal Policy for the Immigrant Population.**

Established by Law 16.478/16 and regulated by Municipal Decree 57.533/16, it is composed of sixteen (16) members, half (8) from civil society and half (8) from the public sector, as well as alternates in the same proportions, totaling 32 members. The CMI is composed of: a president, vice president, executive secretary, members, alternate members, and observers.

Being a representative of the CMI means being a public agent and working on a voluntary basis without remuneration.

The first CMI election took place on June 10, 2018, at six locations throughout the city. A total of 1,516 votes were counted, with voters representing 51 nationalities.

The second election, in 2021, was held in a hybrid format, with 673 voters participating via the virtual platform and 619 in person, for a total of 1,292 people.

The third election was held on July 30, 2023, with the participation of 1,237 voters from the immigrant community.

This year, the selection of civil society representatives to the Municipal Council for Immigrants will be conducted in a hybrid format, both virtually and in person.

Your participation is essential to choose representatives in the three segments that will discuss and propose actions on behalf of the entire immigrant population of the City of São Paulo.

Participate!

## Index

• General information.....	4
• The candidates .....	5
• Election day .....	8
• Virtual voting .....	8
• In-person voting .....	12
• Final considerations .....	14

## 1. What do I need to know to participate in the Municipal Council for Immigrants vote?

The selection of representatives for the Municipal Council for Immigrants is governed by rules and procedures described in [Notice No. 01/SMDHC/2025](#). The process of selecting civil society members to serve on the CMI is done by vote.

**All immigrants residing in São Paulo who are 16 years of age or older** are eligible to vote.

To vote, you must present a **photo ID**, which may be: identity card; passport; identity card from your country of origin; voter registration card from your country of origin; consular certificate; Registro Nacional Migratório (CRNM) card or former Registro Nacional de Estrangeiros (RNE) card; Documento Provisório de Registro Nacional Migratório (DPRNM); Naturalization Application Protocol; National Migration Registry Application Protocol; Refugee Status Recognition Application Protocol; Stateless Status Recognition Application Protocol; Work and Social Security Card (CTPS); National Driver's License (CNH); or General Registration (RG) in the case of naturalized Brazilians.

You will also need a document proving your residence in the municipality of São Paulo or a handwritten statement.

To participate in the virtual vote, **you will need to have a CPF**.

**Eight candidates** will be chosen by vote, divided into three groups:

- **Segment A:** immigrant collectives, associations, or organizations: 3 representatives.
- **Segment B:** immigrant support collectives, associations, or organizations: 2 representatives
- **Segment C:** individual immigrants: three representatives.

In addition to the incumbents, 8 alternates from the same segments and number of seats will be elected.

The classification of those elected must comply with the requirement that at least 50% (fifty percent) be cisgender women, transgender women, transvestites, and non-binary persons.

---

<sup>1</sup> Considering Municipal Decree 56.021, of March 31, 2015.

Voting will take place in two ways:

- Virtual voting – upon prior registration and through the platform called "eleja online"
- In-person voting – at the 6 polling stations provided by the SMDHC

## 2. Who are the candidates for the CMI for the 2025–2027 term?

Each candidate has a name and a number. You may **vote for one (1) candidate for each segment A, B, and C.**

### **Segment A: Immigrant Collectives, Associations, and Organizations.**

## SEGMENTO - A

 <p>Instituto pelo Diálogo Intercultural</p>	 <p>Instituto Missão Batista de Guaianazes</p>	 <p>Federação Alkebulan União Africana</p>
 <p>Coletivo A Voz do Congo</p>	 <p>Associação dos Afegãos no Brasil</p>	 <p>ASOEMBRA</p>
 <p>AMLV Associação de Mulheres Luz e Vida</p>		

**Segment B: Collectives, Associations, and Organizations Supporting Immigrants.**



## Segment C: Individual Immigrants

# SEGMENTO - C



Diana Soliz



Marianna Zawadi  
fzazá)



Desir le Grand



Abigail Cori Flores  
da Vila Maria



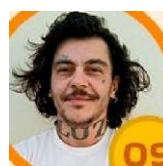
Modou Awa Dieye



Wency Ledix



Mayelin



Paul Gialdroni  
Transmigrante



Constance Salavve



Luis Alfredo  
Rodriguez Jimenez



Reina Malak  
El Hamidy



Sonia Flores  
Mamani



Tifani Ndangi  
Basakinina



Lilian  
Galvarro

### 3. Voting day

The election is scheduled for October 5, from 10 a.m. to 5 p.m.

In-person and online voting will take place simultaneously.

The preliminary election results will be announced on October 8, and candidates who wish to file an appeal may do so until October 13.

**The final election results will be announced on October 16, 2025.**

#### 3.1 Virtual voting

To participate in virtual voting, prior registration was required using a form: <http://siad.prefeitura.sp.gov.br/public/eleicoes-cmi-2025>.

The registration period ran from September 5 to 14, 2025, with a total of 472 registrations. Eligible voters will receive an email on October 5, 2025, at 9 a.m., with voting instructions, username, and password.

This information is personal and cannot be shared with others!

**If you registered and are eligible to participate in the virtual vote, please check your email.**

**The link for virtual voting will arrive in your email by October 5 at 9:00 a.m.**

Virtual voting will take place via the Eleja Online platform.

**Attention!** You can only log in to the platform **once**, after receiving your username, password, and access link.

**When you open the voting website, follow these instructions:**

1. Access your email to check the link and access information;
2. Access the online voting platform using a computer, cell phone, or tablet:  
<https://smdhceleicaocmi.elejaonline.com/>;
3. Then click on “entrar na eleição” (enter the election);





**BEM-VINDO À PLATAFORMA DE VOTAÇÃO ONLINE PARA A ELEIÇÃO DO CONSELHO MUNICIPAL DE IMIGRANTES – CMI – GESTÃO 2025/2027.**

A VOTAÇÃO ACONTECERÁ NO SEGUINTE PERÍODO: DIA 05.10.2025 DAS 10H ATÉ ÀS 17H (HORÁRIO DE BRASÍLIA).



**ENTRAR NA ELEIÇÃO**

4. Log in by filling in the fields with your CPF and the password you received in this email, which was also sent by SMS, according to your registered details for this election;

**Preencha os dados:**

CPF:

Digite sua Senha:

**ENTRAR**

[Esqueceu sua Senha?](#)

5. Next, accept the “Termo de Consentimento para Tratamento de Dados Pessoais (atendendo à Lei Geral de Proteção de Dados – LGPD – Lei Federal nº 13.709/2018)” (Personal Data Processing Consent Form) (in accordance with the General Data Protection Law – LGPD – Federal Law No. 13,709/2018));

**TERMO DE CONSENTIMENTO PARA TRATAMENTO DE DADOS**

ESTE DOCUMENTO VISA REGISTRAR A MANIFESTAÇÃO LIVRE, INFORMADA E INEQUÍVOCA PELA QUAL O TITULAR CONCORDA COM O TRATAMENTO DE SEUS DADOS PESSOAIS PARA FINALIDADE ESPECÍFICA, EM CONFORMIDADE COM A LEI Nº 13.709 – LEI GERAL DE PROTEÇÃO DE DADOS PESSOAIS (LGPD).


AO MANIFESTAR SUA ACEITAÇÃO PARA COM O PRESENTE TERMO, O (A) USUÁRIO (A) DECLARA-SE CIENTE E CONCORDA COM O ACESSO, UTILIZAÇÃO, MANUTENÇÃO E PROCESSAMENTO ELETRÔNICO E MANUAL DAS INFORMAÇÕES E DADOS PRESTADOS PELO USUÁRIO (A) À OPERADORA DOS DADOS R&F SOLUÇÕES EM TECNOLOGIA DA INFORMAÇÃO LTDA. (“ELEIJA ONLINE”), PESSOA JURÍDICA DE DIREITO PRIVADO, INSCRITA NO CNPJ SOB Nº 33.359.257/0001-93, COM SEDE NA RUA FREDERICO MENTZ, Nº 1561, BAIRRO NAVEGANTES, PORTO ALEGRE - RS, CEP 90240-111 EXCLUSIVAMENTE PARA FINS ESPECÍFICOS DE FORNECIMENTO DE SOFTWARE ESPECÍFICO WEB (SISTEMA ELETRÔNICO ELEITORAL), INFRAESTRUTURA E SUPORTE PARA A REALIZAÇÃO DE ELEIÇÃO/VOTAÇÃO, VIA INTERNET A REALIZAR-SE NO DIA XX/XX/2024.

☐ EU CONCORDO COM O TERMO ACIMA EXPOSTO

**CONTINUAR**

6. Voting takes place in three stages:

**FIRST STAGE:** Vote for Segment A - immigrant collectives, associations, or organizations.



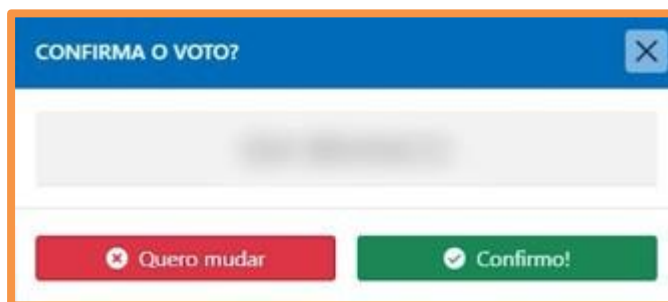
A screenshot of a web interface for the first stage of voting. It features two light gray rectangular buttons stacked vertically. The top button is labeled "CANDIDATO 1" and the bottom button is labeled "BRANCO". Both buttons have a thin orange border.

1. Select a candidate option, or cast a blank or invalid vote;



A screenshot of a web interface showing a single green button with a white checkmark icon and the text "VOTAR" in white capital letters. The button has a thin orange border.

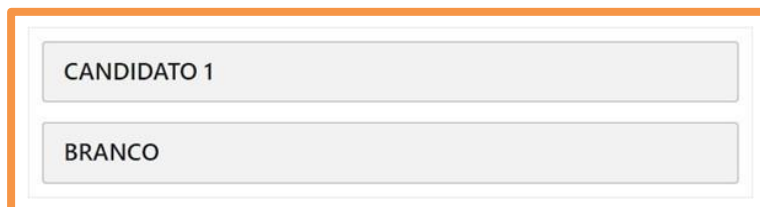
2. Click on “votar” (vote);



A screenshot of a confirmation dialog box titled "CONFIRMA O VOTO?" in white text on a blue header bar. Below the header is a light gray rectangular area. At the bottom, there are two buttons: a red button with a white 'X' icon and the text "Quero mudar", and a green button with a white checkmark icon and the text "Confirmo!". The dialog box has a close button (X) in the top right corner.

3. Confirm your vote and proceed to the next stage of voting;

**SECOND STAGE:** Vote for Segment B - immigrant support collectives, associations, or organizations.



A screenshot of a web interface for the second stage of voting. It features two light gray rectangular buttons stacked vertically. The top button is labeled "CANDIDATO 1" and the bottom button is labeled "BRANCO". Both buttons have a thin orange border.

1. Select a candidate option or cast a blank or invalid vote;



A screenshot of a web interface showing a single green button with a white checkmark icon and the text "VOTAR" in white capital letters. The button has a thin orange border.

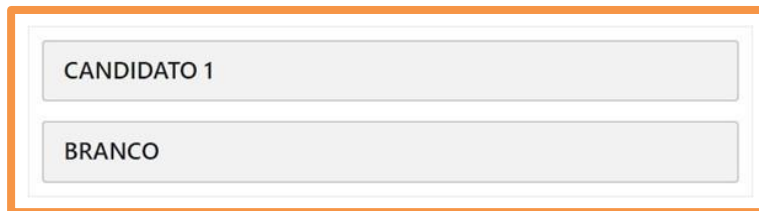
2. Click on “votar” (vote);



A screenshot of a confirmation dialog box titled "CONFIRMA O VOTO?" in white text on a blue header bar. Below the header is a light gray rectangular area. At the bottom, there are two buttons: a red button with a white 'X' icon and the text "Quero mudar", and a green button with a white checkmark icon and the text "Confirmo!". The dialog box has a close button (X) in the top right corner.

3. Confirm your vote and proceed to the next stage of voting.

**THIRD AND FINAL STAGE:** Vote for Segment C - individual immigrants.

A screenshot of a web interface for voting. It features two light gray rectangular buttons stacked vertically. The top button is labeled "CANDIDATO 1" and the bottom button is labeled "BRANCO". The entire interface is enclosed in an orange border.

1. Select a candidate option or cast a blank or invalid vote;

A screenshot of a web interface showing a single blue button with a white ballot icon and the text "VOTAR". The button is centered on a light green background. The entire interface is enclosed in an orange border.

2. Click on “votar” (vote);

A screenshot of a web interface showing a confirmation dialog box. The dialog has a blue header with the text "CONFIRMA O VOTO?" and a close button (X). Below the header is a blurred area. At the bottom, there are two buttons: a red one labeled "Quero mudar" and a green one labeled "Confirmo!". The entire interface is enclosed in an orange border.

3. Confirm your vote and access your voting receipt;

7. Once you have finished voting in all three segments, you will complete the process and receive your voting receipt.

A screenshot of a web interface showing a confirmation message. At the top, there is a green banner with the text "VOTO CONFIRMADO". Below it is a large green box with a white checkmark icon and the text "VOTO COMPUTADO COM SUCESSO!". At the bottom, there is a blue button labeled "Ver comprovante". The entire interface is enclosed in an orange border.

Download or email your Voting Receipt if you prefer.

8. That's it! Your vote has been registered. You can now close the platform!

**If you have any questions regarding online voting, please contact us during the voting period: +55 11 93803-3526 (WhatsApp)**

## 3.2 In-person voting

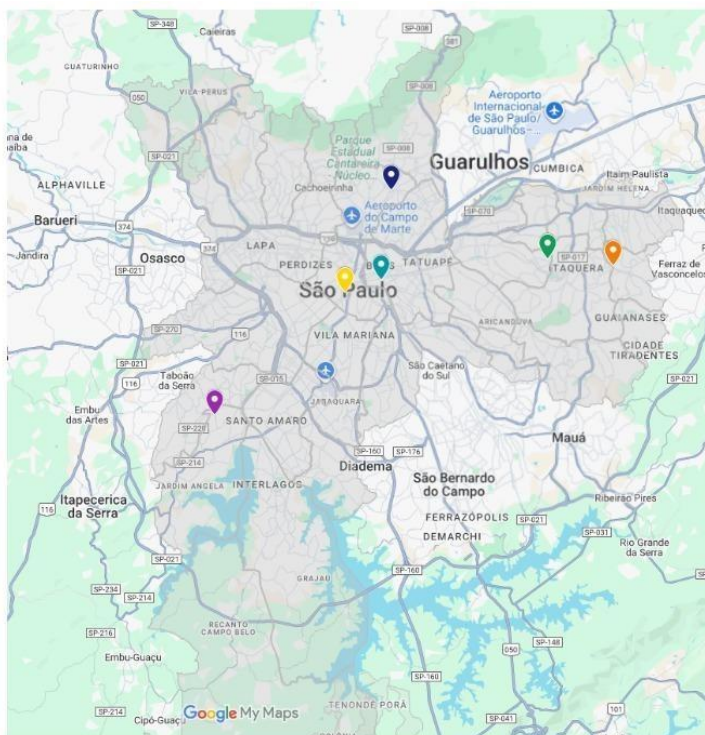
In-person voting will be conducted using the **same platform as online voting**.

**In-person voting is scheduled for October 5 (Sunday) from 10:00 a.m. to 5:00 p.m. at the following locations:**

- **North Zone:**
  - **Descomplica Tucuruvi**  
Avenida Tucuruvi, 808 - Tucuruvi, 02304-002  
Near the Tucuruvi Metro Station – Blue Line 1
- **Downtown:**
  - **CRAI Oriana Jara Reference and Service Center**  
Rua Major Diogo, 834 – Bela Vista, 01324-001  
Near São Joaquim Metro Station – Blue Line 1
  - **Museu da Imigração (Immigration Museum)**  
Rua Visconde de Parnaíba, 1316 - Mooca, 03164-300  
Near Bresser-Mooca Metro Station – Line 3 Red
- **South Zone:**
  - **CRPIR GIOVANNI GRONCHI Racial Equality Reference Center**  
Rua. Thereza Mouco de Oliveira, 157 - Jardim Sao Luiz, 05846-420  
Near Giovanni Gronchi Metro Station – Line 5 Lilac
- **East Zone:**
  - **CEU Jambeiro**  
Avenida José Pinheiro Borges, 60 - Guaianases, 08420-092  
Near Guianeses Station – Line 7 Coral
  - **EMEF Dona Jenny Gomes**  
Rua John Neper, 109 - Jardim Coimbra, 03693-100 Near  
Arthur Alvim Metro Station – Line 3 Red

### **Recommendation:**

- Check the location closest to your home or workplace;
- Arrive early;
- Bring official photo ID and proof of residence;
- Pay attention to the opening hours of the polling stations.



#### Locais de Votação

- CRAI - Centro de Referência e Atendimento par...
- Descomplica SP - Santana/Tucuruvi
- Museu da Imigração do Estado de São Paulo
- EMEF Jenny Gomes
- CEU Jambeiro
- CRPIR GIOVANNI GRONCHI

#### 4. Final Considerations

The Council election is a democratic process that promotes immigrants' right to vote and be elected, and to participate socially and politically in decisions regarding public policies affecting the immigrant population in the city.

The electoral commission and the Coordination of Policies for Immigrants and Promotion of Decent Work ensure the broad participation of all people in this process.

**If you have any questions, please call:**

(11) 2833-4353/4354

Or by email [migrantes@prefeitura.sp.gov.br](mailto:migrantes@prefeitura.sp.gov.br)

Follow CMI on social media:

Facebook and Instagram: [@cmi.spbr](#)